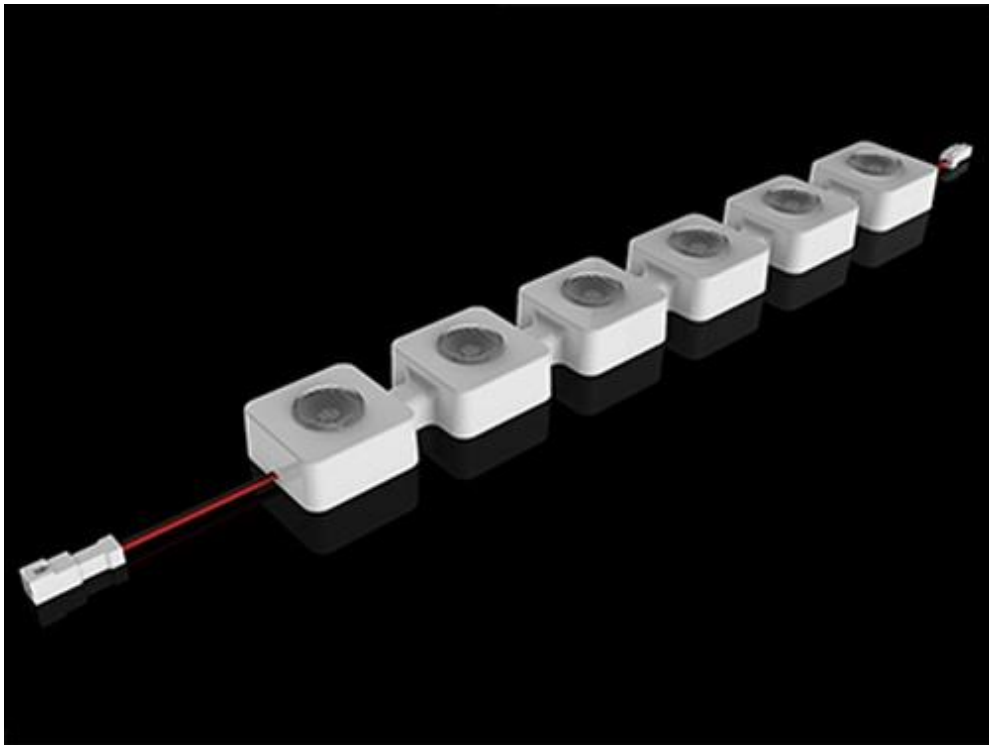




VEX-FLEXI-LIGHT-MAX

INSTALLATION INSTRUCTIONS



VERSION 1.0

THE VEXICA GROUP LIMITED

TYPHOON HOUSE, MOXON WAY, SHERBURN-IN-ELMET, LEEDS, LS25 6FB

Contents

Scope	2
Revision History	2
Safety Precautions	3
Tools Required	4
Conditions of Install	4
Installation Instructions	5
Wiring Instructions	7
Extending Vexica Standard Input Cables	8

Scope

This manual details the installation of a typical 24VDC VEX-Flexi-Light-Max luminaire.

Please ensure you have read the following instructions thoroughly and are capable of undertaking the required actions before commencing installation.

If you have any queries, please consult our Technical Support Department before proceeding.

Revision History

Rev	Date	Comment	Author
A	14/10/2021	Document created	JP
B	08/12/2021	Doc Number amended	MB
C	22/04/2025	RGB-DYN ADDED	MA

Approved By

Person	Date	Signature
Technical Manager	08/12/2021	LG

Safety Precautions
ONLY USE VEXICA APPROVED DRIVER

- Please take note of luminaire and driver ingress protection rating when deciding location.
- Make sure all connections made are tight, with no loose strands and with appropriate IP rated connectors.
- Do not reverse polarity.
- Always allow sufficient slack on the supply cable in order to remove luminaire from its position for any further maintenance.
- Make sure supply cable is not in contact with any sharp objects.
- Do not leave cable or any connector exposed to rain/moisture for any period of time.

CAUTION!

- USE ONLY WITH MAXIMUM OUTPUT 24 VDC VOLTAGE AND CLASS 2 POWER UNIT
- All images are representative, and may not be of the actual product supplied, depending on the options specified when ordering.
- Avoid staring directly into light beam.
- The product should be installed by a certified electrician and in accordance with local regulations.
- Take extreme care when working with mains voltages.
- There are no user serviceable parts inside this unit. Do not attempt any repairs yourself; doing so will void your manufacturer's warranty.
- During operation, the housing may become hot. Avoid touching the unit with bare hands while in use.
- Do not allow the product to operate in ambient temperatures above the maximum ambient temperature stated on the datasheet. Doing so will void any warranty.
- Do not use aggressive cleaning agents! Any chemical attack to the seals will not be covered by any warranty.
- DO NOT "HOT PLUG" THE LED FITTINGS OR DRIVERS AS THIS WILL INVALIDATE THE WARRANTY!

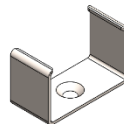
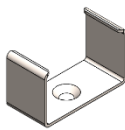
Conditions of Install

- Only Vexica approved dimmers can be used.
- Starter cables can be extended by the client to maximum of **10m**, using 1.5mm² 3-core cable
- Flexi-light-Max can be installed in a single line of up to 1000mm only as a single unit or as a daisy chain, but the ultimate length of the chain must not exceed 2666mm
- Flexi-light-Max units must be heated up to room temperature before being installed
- Due to best install practices, it is therefore best to install products at a temperature range between +18°C and +40°C
- Do not power fittings in hot climates during peak sunlight hours
- Installation surfaces must be free of dust, grease, oil and other separating agents
- The installation surface must be dry and clean
- Whilst adhering a pressure of 10-15 N/cm² only is to be applied
- If the bending radius applied is too small electrical circuit damage can occur. This is due to inadequate handling and not following the minimum bend radius requirements
- The minimum bend radius for all Flexi-light products is 150mm and should not be exceeded
- Mounting clips is the preferred method of installation however 3M Adhesive tapes can be used for installation in some cases. 3M tapes are provided separately in this case and applied by the installer
- The 3M self-adhesive tapes are not suitable for overhead installation. 3M tapes provide adhesion only when following full guidelines on fixation. However due to ambient conditions adhesion may wear off with time and become unfixed. It is therefore advised in most cases to utilise the fixing clip accessory
- Minor cracks or cosmetic blemishes may be visible over time, this does not affect the functionality of the product.

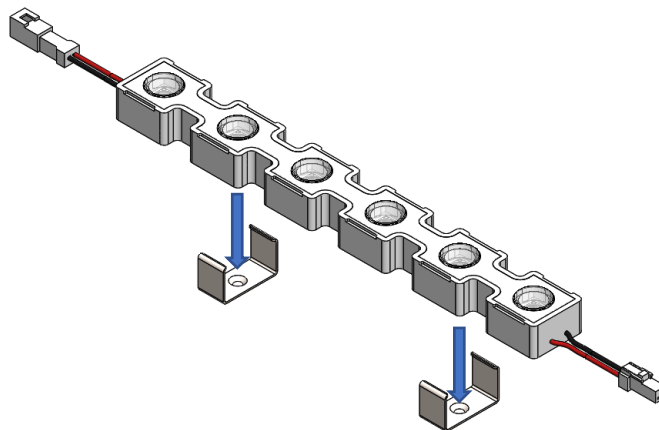
Installation Instructions

Fix mounting clips to the required surface using appropriate screws (Vexica do not provide these as the type and size depends on the surface luminaire is mounted to)

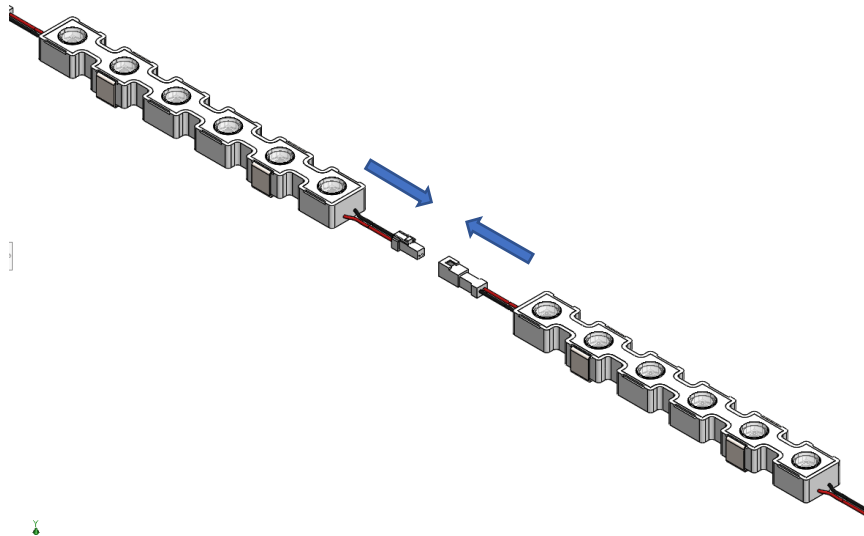
Attention! Always use at least two clips per 6 LEDs. Clips must be installed before inserting luminaire.



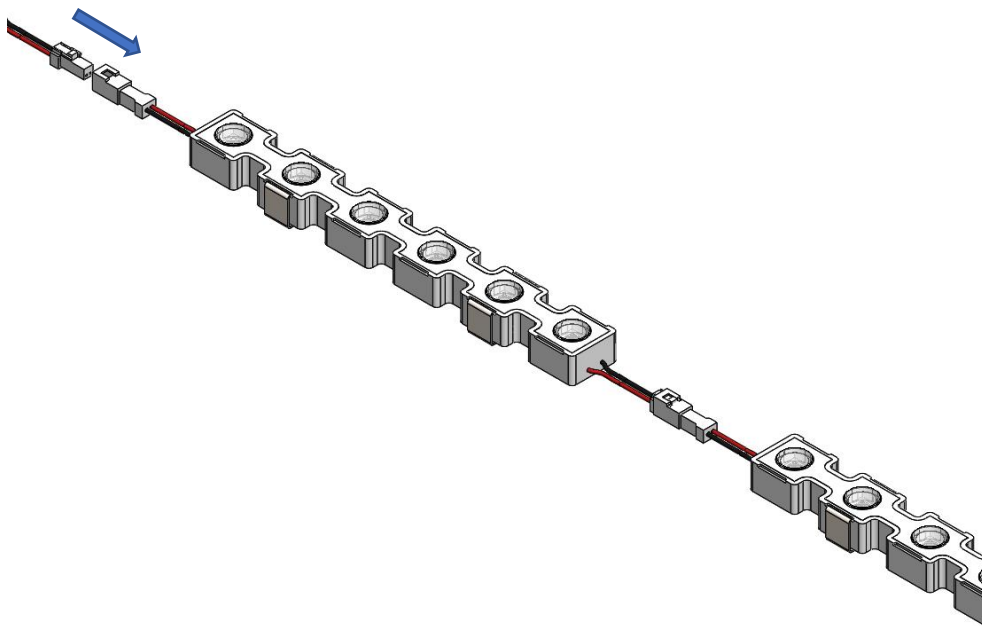
Push luminaire into the mounting clips, avoiding putting pressure on the optics.



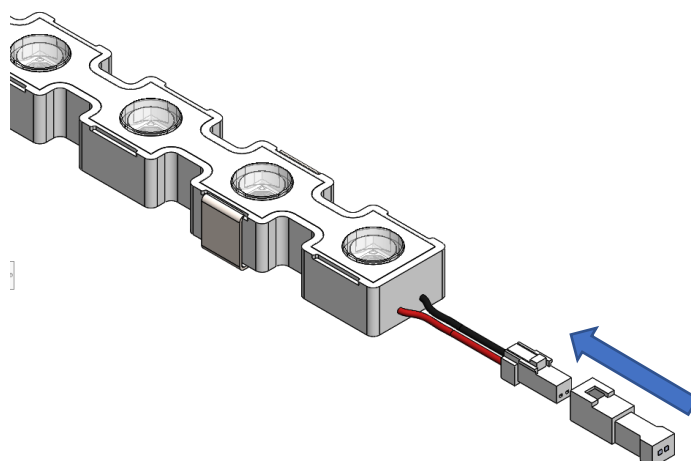
Connect luminaires together. Do not exceed maximum number of luminaires allowed in a single chain (Max fitting chain length 2666m) .



Connect starter cable into the input of the first luminaire in a 'string'.



Connect terminator plug to the output of the last luminaire.



Securely mount LED/PSU driver and connect starter cable following colour coding:

Single Colour

Red	+24 VDC
Black	GND

RGB/RGBW Dynamic

Red	+24 VDC
White	Data
Black	-GND

Luminaire power (W/m)	Maximum meters allowed per run
Single colour 24W/m	2.7m
RGB Dynamic 20W/m	3.6m/ up to 9m with power injectors

Extending Vexica Standard Input Cables

1. Extension cables can be purchased from Vexica. Product length needs to be specified and approved at the time of ordering
2. When extending cables, or making any connections on site, always make sure the connection has the appropriate IP rating
3. If the starter cable is to be extended, then Vexica recommend that all connections are made using gel boxes

